



DuxxBak Quick Guide

Getting Started – Installation Tips

July 28, 2014

- Carefully read and use the installation instructions that are provided here.
- Hybrid engineered composite decking will expand and contract as temperatures change. To minimize these effects, attempt to install deck boards when temperatures are as close to 60 degrees as possible. For the most uniform results on hot days, lay the boards out in the shade before installation to minimize the effects of temperature extremes. Also avoid extreme cold temperature installation.
- An unrestricted minimum pitch of 1/8" per foot in the direction of intended water flow is required. A pitch of 1/4" per foot will provide better water shedding assurance.
- A gap of at least 1/8" must be provided where the deck meets the house or other structure. A minimum gap of 3/16" must be provided at each side of posts or other obstructions.
- See the "DuxxBak™ Water Shedding Deck System Installation Instructions" for fastener selection recommendations to assure a secure installation. Fastener selection does make a difference.
- All fasteners must be located a minimum of 3/4" from the ends of the deck boards to avoid damage. Additionally, any necessary face fasteners should be placed near the deck board structural septum. Avoid over penetration of the fastener heads to assure that the fasteners will not pull through.
- Adequate under deck air circulation is required. In general practice at least 24" of open space is required.
- The installation of a ceiling under your deck is not recommended. If a ceiling is installed it should be constructed using water resistant materials and must be vented to provide adequate airflow to the substructure.
- Adequate drainage and/or ground run off capacity should be provided to assure that continuing wet conditions are not present in the soil under the deck.
- Avoid conditions where reflective heat buildup from "Low-E" glass may cause damage to your deck.
- Installation and care instructions can also be found on our website at www.GreenBayDecking.com.
- The "QR" code show on this page will direct you to the Green Bay Decking website and complete installation instructions via your cellular telephone. An "app" is required.

Thank you for choosing the DuxxBak Water Shedding Deck System.



GENERAL INFORMATION

Fasteners

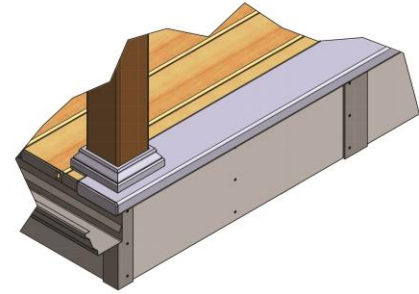
- **DO NOT USE “COMPOSITE SCREWS” OR SCREWS WITH “REVERSE THREADS.”**
- Use #7, #8, or #9 stainless steel or coated “trim head” screws 1-1/4” (or longer) to attach the decking at the fastening wing. **Insert fasteners at an angle of 55-60 degrees.** (Please see illustration)
- Use #7, #8, or #9 stainless steel or coated “trim head” screws 2-1/4” (or longer) to attach decking at the wall when it is necessary to insert a fastener through the face of the deck board. It is best to avoid this type of attachment whenever possible as it can become a point where water can eventually enter and find its way to the area below.



INSTALLATION OF YOUR DECK

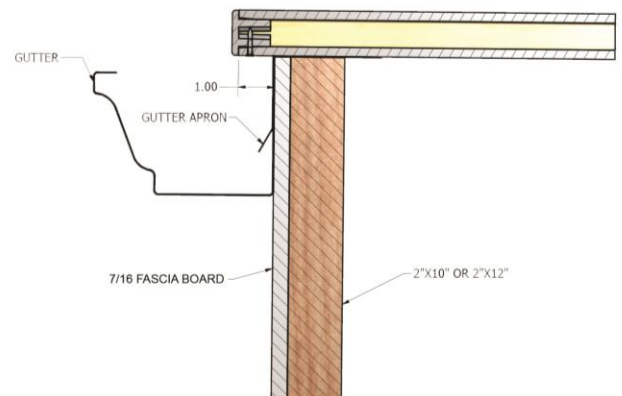
Step 1: Install Fascia

- Use a minimum of three evenly spaced fasteners every 12” or two evenly spaced fasteners every 12” if the fascia has been ripped down to 6” or less in width.
- If two or more pieces of fascia must be butted together, leave a 3/16” gap and cover the gap with a 1” or 2” piece of fascia installed vertically. Fasten according to illustration below.
- Allow 3/16” gap at corners, and finish corners with a fabricated corner molding from the walls of a small section of GeoDeck 4” x 4” sleeve to cover the point where two pieces of fascia meet at a corner. Fasten according to illustration below.



Step 2: Install gutter apron

Cut and install coated aluminum (or other material) gutter apron to the joist at the end of the deck where the water will shed from the deck. (Please see illustration)



Special Design Concepts

Special design concepts may require that you and your designer or builder consider how to best implement those concepts prior to construction to avoid installation and use concerns.

- DuxxBak decking is available in 12’, 16’, and 20’ lengths. Design concepts must be considered if conditions require longer spans to assure that water can properly shed from the deck. **Deck boards should not be butted end to end.**
- **Note that each full width board will cover 5-3/4”.**
- **For other special design concepts, please see full DuxxBak™ installation instructions (page 6).**

Substructure Framing

DuxxBak decking is design for installation on joists that are spaced at 16” on center. When using GeoDeck or TerrainDeck S4S for stair treads, stringer spacing should be no more than 12” on center.

Structural Blocking

Structural blocking as described below is important to a safe deck and is generally required by local building codes.

- Center blocking ties the joists together to complete the framing. It will keep joists from twisting and bowing and assist in keeping the deck square. Blocking should be installed every 6’ along the joists, or if less than 12’ at the mid-span. **Provide additional cross bracing as necessary.**

Step 3: Determine Starting Point

Determine which side of the substructure will be the starting point for your deck. For the purpose of these instructions the deck boards will start at that left side and work to the right as viewed from the end of the deck opposite of your home.

Step 4: Assure most desired appearance

Lay the deck boards out to determine how the deck will best show its unique brushed appearance.

Step 5: Make preparations

Make any necessary preparations in the areas where the deck will be attached to the house or other structure. It may be necessary to remove the lower layer of siding to allow for proper flashing.

DuxxBak Water Shedding Deck System Installation Methods

(Select Method or Combination of Methods that best fit your needs)

NOTE: Three installation guides are described below. Please review these and determine if one of these methods or a combination of these methods will serve the requirements of your deck project.

Guide A: Seal and flash deck to house. Seal *“through the deck support posts”* to decking to create a water seal. Also requires a sealant to be applied to the length of the joint of any deck boards that intersect the *“through the deck support posts”*.

Guide B: Seal and flash deck to house. Modify (cut away one cavity) a GeoDeck Commercial board to create a perimeter board that can guide the flow of water from the deck. Requires holes to be cut in the perimeter board at the points where *“through the deck support posts”* will penetrate the deck. Seal *“through the deck support posts”* to perimeter board or deck board as necessary and seal joints of deck boards that will intersect any *“through the deck support posts”*. Also requires a sealant under the wing of the modified perimeter strip wing.

Guide C: Seal and flash deck to house. Cut coated aluminum flashing (length of the deck plus 3/4”) to a 12” width and form one edge of the length up 3/4” and one edge of the length of the flashing down 3/4” to form a 10” wide water diverting pan. Requires holes to be cut in the pan at the points where *“through the deck support posts”* will penetrate the deck. Seal *“through the deck support posts”* to pan and to the decking.

For the purpose of this quick guide, Guide A will be the only method that will be covered. For installation information regarding Guide B or C, please refer to our full DuxxBak Installation Manual. The manual can be found at www.GreenBayDecking.com.

INSTALLATION GUIDE A

Seal and flash deck to house

Seal *“through the deck support posts”* to top surface of the decking

Seal the interlocking tongue and groove of boards that will intersect *“through the deck support posts”*

Step A-1: Install the first deck board

Cut the first board to length allowing a 1” overhang at the outer end of the deck and allowing for the 1/8” gap at the end of the board that intersects the house.

Cut the entire groove wing (1-9/16” cut) away from the first board to leave a smooth outer surface.



Position the first board to the deck with the fastening wing to the right side with the board overhanging the installed fascia board 9/16”.

If the board is being placed against the house a minimum 1/8” gap should be allowed between the length of the board and the wall. A 1/8” gap should also be allowed at the point where the end of the board meets the house.

Notch the board as necessary to allow for *“through the deck support posts”* that may penetrate the deck substructure at the point where the board is being installed. Allow for a clearance of 3/16” on all sides of posts or other structure obstructions when installing the deck board.

- Place a bead of sealant in the interlocking groove if the board seam will intersect a *“through the deck support post”* to assure that water will not find its way through the deck to the surface below.

Place a bead of sealant on the joist where the end of the deck board will rest at the house side of the deck.



If the length of the board will be placed along a wall of the house also place a bead of sealant on the joist where the board will rest.



Secure the deck board to the joists (**a strip of waterproofing butyl tape should be placed on the bottom of the deck board where the fasteners will penetrate through the top of the deck board**) by inserting one trim head screw fastener through the face of the board at each joist with the fastener being placed near a septum of the deck board to take advantage of the points of strength. Assure that the screw heads are seated just below the top surface of the board in order to avoid pullout. Complete the installation of the first board by inserting a fastener through the fastening wing at each joist (55 degree angle).

Step A-2: Install the second and seceding deck boards.

Repeat all cut lengths and gapping from posts and the house from step 1.

Notch the board as necessary to allow for "through the deck support posts" that may penetrate the deck substructure at the point where the board is being installed. Allow for a clearance of 3/16" on all sides of posts or other structure obstructions when installing the deck board.

- Place a bead of sealant in the interlocking groove if the board seam will intersect "through the deck post" to assure that water will not find its way through the deck to the surface below.

Insert one fastener through the fastening wing at each joist. Do not fasten through the face of the deck board.

Step A-3: Install the final deck board.

Cut the final board to length allowing a 1" overhang at the outer end of the deck and allowing for the 1/8" gap at the end of the board that intersects the house.

Cut the final deck board to remove the tongue and fastening wing (1-9/16" cut) away from the final deck board.

- If the deck width did not allow for this final board width, it will be necessary to determine how the final board will be sized and installed.



****Follow proper gapping and fastening procedures from the previous step.**

Step A-4: Install seal and flash

Place a bead of sealant between the board ends and the wall to retard water.



Cut and position coated aluminum (or other material) flashing with the flashing being install behind the house wrap material and over the decking.

Place a bead of sealant on top of the decking in the area that will be under the flashing before the flashing is put into its final position.



Move the flashing into position behind the house wrap material and over the decking assuring that the sealant is bonded to the decking and flashing.



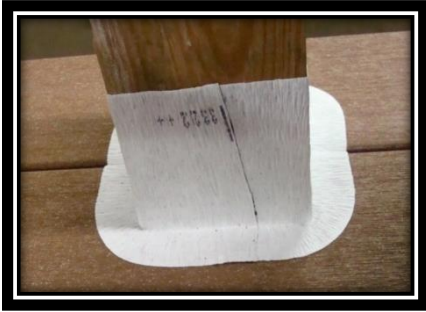
Seal the flashing to the wall under the house wrap using a sealing tape to assure that any moisture that penetrates the house wrap will not find its way behind the flashing.



Turn the house wrap material down over the flashing and seal the house wrap material to the flashing with a sealing tape.



Install or reinstall siding if it has been removed for the deck installation. Install waterproofing butyl tape to the deck board (7/8") and deck post at all locations where a "through the deck support post" penetrates the deck to assure that water does not find its way through the deck to the area below.



The waterproofing butyl tape will be concealed by the post sleeve and base trim when the rail system is installed.



Step A-5: Install end caps to exposed board ends

Install the end caps, selecting right end caps if the board tongue is on the right side as you face the deck at the point where the end caps will be installed. Select left end caps, if the board tongue is on the left as you face the deck at the point where the end caps will be installed.

- Apply a dab of sealant to form a water stop near the end of the deck board fastening wing to prevent any moisture from flowing backwards and then dripping from the edge of the board.
- Apply a generous amount of sealant to the contact points of the end caps before inserting. Avoid placing adhesive at the three drain points at the bottom of the end cap.
- Insert the end cap assuring that the drain slots are down and secure with two stainless steel brad nails or screws.

Step A-6: Install gutters and water diverting system

Install system per your design concept.

Step A-7: Completion

- Install rail system to assure the safety of those who will use your deck.
- Assure a complete and safe installation.
- Clear the deck and surrounding area to assure safety.
- Clean deck as necessary to provide a pleasing surface. Deck will require occasional cleaning to remove dirt and environmental debris.
- Enjoy your new deck.

Product Features

- Unique water shedding board requires no hidden fastener system
- Outdoor furniture can be safely stored under the deck
- Outdoor activities can continue during periods of rainfall
- Resistance to decay and mold
- Strength and durability
- Less maintenance
- Eco-friendly
- 25-year limited warranty
- Easy to install
- DuxxBak decking can be installed on joists that are spaced at 16"
- GeoDeck and TerrainDeck S4S Stair Treads can be installed on 12" centers

For More Information

- For the most up-to-date installation instructions, please visit www.GreenBayDecking.com.

Thank you for using our DuxxBak Water Shedding Decking System

Green Bay Decking, LLC

1518 South Broadway
Green Bay, WI 54304
(877) 804-0137

